

It's like having a guard in each guestroom



## SENTINEL Standard



### FEATURES

#### Basic digital security taken to a new level

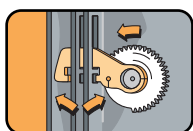
With the Sentinel Standard in-room safe, you can rest assured that you've provided superior security for your valued guests. The sleek, ergonomic design and uncomplicated operation makes this exceptional new model convenient for your guests to use and affordable for you to purchase and maintain. Yet, its unique modular construction and interchangeable electronics makes adding advanced features or upgrading to new access technology as simple as changing the front panel of the safe. This uniquely flexible solution is based on Elsafe's proven reliability and state-of-the-art electronics. Operated with

a guest-chosen 4-digit PIN code, the Sentinel Standard eliminates the risk of lost keys or cards, saving you both staff time and maintenance costs. The privacy of a PIN code also provides added peace of mind for your guests. In addition, you'll have the security of knowing that your in-room safes are backed by the worldwide leader in electronic safe technology. Constructed with extra security features such as a revolutionary locking mechanism and solid steel bolt hinges, the Sentinel Series provides exceptional strength that is setting new standards in the industry. In fact, with all these features in mind, it's apparent that there is nothing standard about this safe after all.

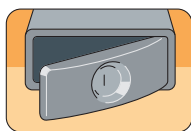
- Simple 4-digit PIN code operation
- Revolutionary locking system with interlocking deadbolt mechanism
- One piece, cold-pressed curved door is over 70% stronger than flat steel doors
- Extended solid steel bolt hinges for maximum security and durability
- Solid, arc-welded heavy-gauge steel construction and recessed back for superior strength and security
- Anti-tamper, auto relock function
- Audible confirmation tone for code entry
- Three convenient standard sizes available
- Attractive, ergonomic design
- Unique modular construction for easy upgradability

## TECHNICAL INFORMATION

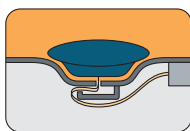
With the state of the art security features offered in the Sentinel Series of in-room safes, there is simply no better way to protect the property of your guests at such an affordable price. Based upon the Elsafe industry-leading Infinity Collection that has been widely applauded since being introduced, the Sentinel Series is setting new standards for strength and security, while offering an economical solution that won't break your budget.



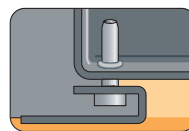
ELSAFE'S REVOLUTIONARY LOCKING SYSTEM RESISTS FORCIBLE ENTRY.



ONE-PIECE COLD-PRESSED DOOR IS OVER 70% STRONGER THAN FLAT STEEL DOORS.



ANTI-TAMPER LABYRINTHS PROTECT SENTINEL ELECTRONICS FROM MANIPULATION.



EXTENDED SOLID STEEL BOLT HINGES ARE SECURE AND ULTRA-RELIABLE.

| <b>Sentinel Standard</b> |  | Model code SS                   |                      |                           |
|--------------------------|--|---------------------------------|----------------------|---------------------------|
| Sizes                    |  | 25, 41 and 49 cm external depth |                      |                           |
| Measurements             |  | SK25                            | SK41                 | SK49                      |
| Outside H/W/D            | mm   | 200/432,3/250                   | 200/432,2/412,6      | 200/432,2/493,4           |
|                          | in   | 7 7/8 / 17 / 9 7/8              | 7 7/8 / 17 / 16 1/4  | 7 7/8 / 17 / 19 1/2       |
| Inside H/W/D             | mm   | 196/428,2/142,8                 | 196/428,2/304,5      | 196/428,2/385,3           |
|                          | in   | 7 3/4 / 160 7/8 / 5 5/8         | 7 3/4 / 160 7/8 / 12 | 7 3/4 / 160 7/8 / 15 5/32 |
| Door opening H/W         | mm   | 148/320                         | 148/320              | 148/320                   |
|                          | in   | 5 3/4 / 12 9/16                 | 5 3/4 / 12 9/16      | 5 3/4 / 12 9/16           |
| Internal volume          | litres   | 12                              | 25,5                 | 32,3                      |
|                          | cu ft  | 0,4                             | 1                    | 1,1                       |
| Weight                   | kg   | 10,8                            | 13,9                 | 15,5                      |
|                          | lb   | 23,8                            | 30,6                 | 34,2                      |
| Locking mechanism        | Inter-locking deadbolt mechanism               |                                 |                      |                           |
| Locking/access code      | 4-digit  |                                 |                      |                           |
| Closing                  | Push button                                    |                                 |                      |                           |
| Inside carpet            | Yes  |                                 |                      |                           |
| Display                  | No   |                                 |                      |                           |
| Beeper                   | Yes  |                                 |                      |                           |
| Override                 | Electronic key or the SafeLink                 |                                 |                      |                           |
| Memory function          | No   |                                 |                      |                           |
| Power supply             | 5 A4-cells in keyboard                         |                                 |                      |                           |
| Steel thickness          | Door, frame and back-wall: 2,5 mm / Body: 2 mm |                                 |                      |                           |
| Fastening methods        | Back wall: 2 bolts / Bottom: 4 bolts           |                                 |                      |                           |

The Sentinel series consists of three more models:



Sentinel Advanced: One eye on the future – the other on the past.



Sentinel Plus: The difference is easy to see.



Sentinel SmartKey: A simple solution to superior guestroom security.