

Electronic Guest Door Lock

An electronic lock designed for the hotel industry

The VingCard electronic lock is designed and built specifically for the hotel industry use. It is completely independent and stand-alone, as well as it can be operated by keycards issued to both staff and guests.

The locks are controlled by software resident in the locks, activated by cards coded in the issuing computer.



FEATURES

:: High quality brass escutcheon reinforced by a steel plate for added security. Solid brass handles.

:: Self-lubricating, long life bearings. Tested to over 1,2 million openings without visible signs of wear. The handle feels smooth and reliable, and will always return firmly to the horizontal position.

:: Easy to use. Conforming to the requirements of the Americans with Disabilities Act (ADA).

:: Unique life safety cylinder, a recodable emergency only override.

:: Recoding. The cylinder is recoded from the outside of the lock, without disturbing the guest.

:: Full mortise ANSI or EURO lock case, with a security latch and a strong dead bolt.

:: Case hardened steel deadbolt with a full 1-inch throw (ANSI) operated by a thumb turn on inner side.

:: 3-hour UL fire rating for maximum guest safety.

:: "Panic release" deadbolt and latch are retracted automatically by a single action of the inner handle.

Design & Finishes



Handle and design options

Several varieties to suit your hotel design and preference.



Ship

Finishes: All except gold and silver anodized



Standard

Finishes: All except gold and silver anodized.



Gothic

Finishes: All except gold and silver anodized.



Presto

Finishes: Gold anodized or silver anodized.



Knob

Finishes: All except gold or silver anodized.



Flair

Finishes: All except gold and silver anodized.



Functional EURO

Finishes: All except gold and silver anodized.



ANSI 1

Finishes: All except gold and silver anodized.



Functional ANSI

Finishes: All except gold and silver anodized.



Wing

Finishes: All except gold and silver anodized.



High Tech

Finishes: All except gold and silver anodized.



Straight

Finishes: All except gold and silver anodized.



Finish options



Satin Chrome
Our most popular finish with durability and tarnish resistance.



Polished Chrome
A highly polished finish with similar excellent durability and tarnish resistance.



Satin Brass
A soft smooth finish, protected with clear powder coated polyester, for interior doors.



Polished Brass
A soft smooth finish, protected with clear powder coated polyester, for interior doors.



Light Bronze
A rich simulated light bronze powder coated polyester finish, for interior doors.



Gold anodized aluminium
A warm smooth finish for our presto design only. This finish is highly tarnish resistant. Suitable for outdoor installations.

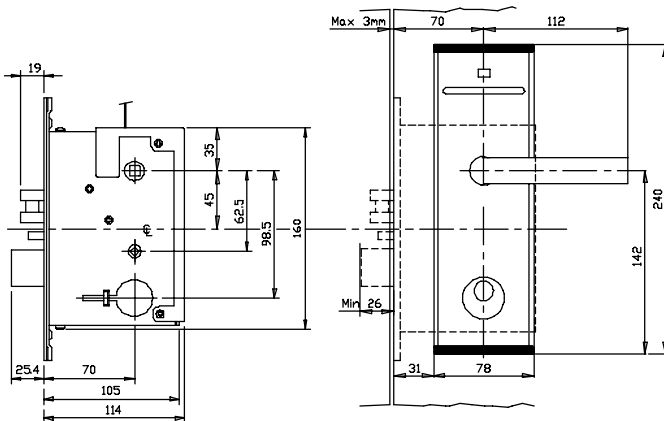


Silver anodized aluminium
A smooth silver finish, similarly tarnish resistant, for our presto design only. Suitable for outdoor installations.

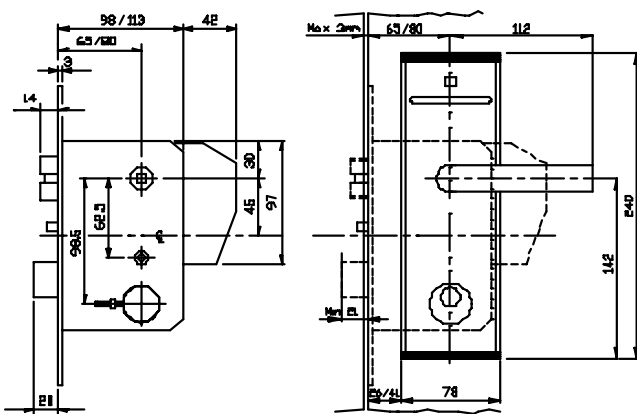
RAL color finish
A choice of any color from the RAL matching system, applied as a pigmented powder coated polyester.

Electronic Guest Door Lock

Standard ANSI lock



Standard EURO lock



The lock is powered by 6 AA alkaline batteries, with a normal lifetime of 2-3 years depending on both usage and climatic conditions.

A warning light, visible on all staff cards used for opening, warns that batteries have to be changed within 2 months.

Lock cases in ANSI and EURO version

Suitable for the American market in three versions (ANSI)

- 25 mm front
- 28 mm front
- 32 mm front

Backsets: 70 mm

Suitable for the European market in three versions (EURO)

- 20 mm front
- 22 mm front
- 24 mm front

Backsets: 65 and 80 mm.

Suitable for the Japanese market in three versions (ANSI)

- 25 mm front
- 28 mm front
- 32 mm front

Backsets: 70 mm

Suitable for the Pacific Ocean market in three versions (ANSI)

- 25 mm front
- 28 mm front
- 32 mm front

Backsets: 70 mm

The lock is operated by handles from both the inside and the outside of the door.

The inside operation retracts both deadbolt and latchbolt for easy egress.